

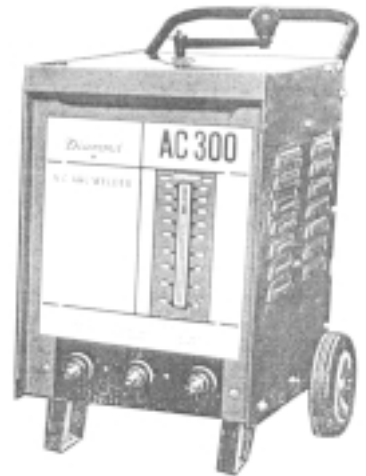
# Welding Machine



Order No		WM-220	WM-300	WM-400	WM-500
Mains Voltage	V.	230	415	415	415
Frequency	Hz.	50	50	50	50
Absorbed Power	KW/KVA.	7.7/10.3	13/24.5	19.5/32.5	23.5/41
Current Range	Amp.	45-220	50-300	80-400	80-500
Duty Cycle	%	30	40	60	60
Output No-Load Voltage	V.	74	80	80	80
Rated Load Voltage	V.	29	35	40	40
Input/Welding Cable	mm <sup>2</sup>	14/22	16/25	16/50	25/80
Electrode Dia.	mm.	2.0-3.2	2.0-6.0	2.6-8.0	3.2-10.0
Dimensions (W x D x H)	cm.	34x45x62	38x50x63	40x58x.5x70	45x58.5x70
Weight	kg.	79	104	138	154

## AC Arc Welder for Shielded Metal

Order No	Rated Output Amperes 50% Duty Cycle	Welding Amperage Range	Maximum Open Circuit Volts	amperes Input at Rated Load Out 50 Hz		Electrode Size	Weight
				440V	230V		
AC 200	200	L70-190 H110220	65V	30	36	26-4	70 kg
AC 300	300	L90-200 H120-300	70V	35	-	26-5	95 kg
AC 400	400	L90-200 H200-400	70V	45	-	26-5	140 kg



## OWM - 130A

The OWM 130 is an efficient and handy oil cooled electric welder. It is robustly constructed and is ideal for general welding applications. Three (3) Welding Range of 90A, 110A and 130A makes it suitable for electrodes from 2 mm (14 SWG) to 3.2 mm (10 SWG).



### TECHNICAL DATA

<b>Primary:</b>	Voltage: 240V 440V/50HZ
	Current: 15A 20A
	Welding Range: 90A, 110A, 130A, 150A, 170A, 190A
	Welding Voltage: 25V(ave) on load 55V open circuit
	Voltage: 55V Open Circuit 23V(ave) on load
	Welding Current: 90A, 110A, 130A

Welding Current	Duty Cycle
90A	65%
110A	50%
130A	45%
150A	40%
170A	25%
190A	25%

Weight: 57kg  
(With Oil)

Dimension: 300 mm(12 ins) x 590 mm(23 ins) x 480 mm(19 ins)

### TECHNICAL DATA

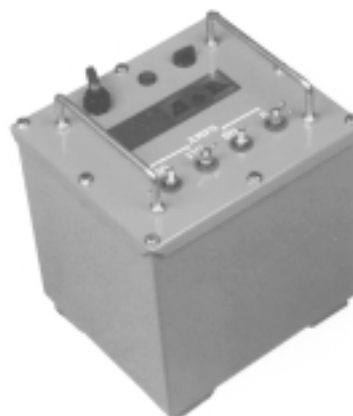
**Primary:** Voltage: 240V 50HZ Current: 15A

**Secondary:** Voltage: 55V Open Circuit  
23V(ave) on load  
Welding Current: 90A, 110A, 130A

Welding Current	Duty Cycle
90A	65%
110A	50%
130A	25%

Weight: 28kg  
(With Oil)

Dimension: 240 mm(9 1/2 ins) x 270 mm(10 1/2 ins) x 280 mm(11 ins)



## OWM - 190

The OWM 190 is an efficient, easily transportable, oil cooled electric welder. It is robustly constructed and is ideal for almost all are welding applications. There is a choice of 5 Welding currents from 90A to 190A. and this makes the machine suitable for electrodes from 4 mm (8 SWG).