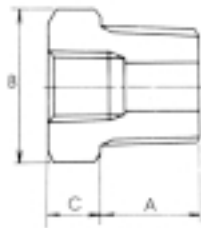


Stainless Steel 3000 lb Socket Weld Fitting

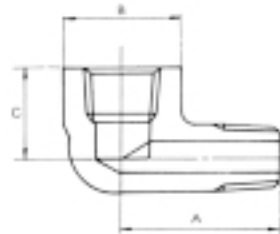
S/S 316, 316L, 304, 304L

HEX BUSHING



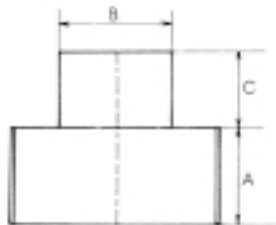
SIZE	A	B	C
1/4	0.50	0.63	0.16
3/8	0.56	0.69	0.19
1/2	0.63	0.88	0.19
3/4	0.69	1.06	0.25
1	0.81	1.38	0.25
1-1/4	0.88	1.75	0.31
1-1/2	0.88	2.00	0.38
2	0.94	2.50	0.44

STREET ELBOW



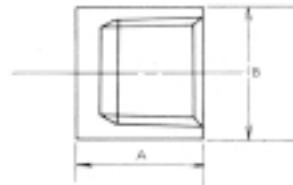
SIZE	A	B	C
1/8	1.06	0.75	0.75
1/4	1.25	1.06	0.88
3/8	1.50	1.25	1.00
1/2	1.63	1.50	1.13
3/4	1.88	1.75	1.38
1	2.25	2.00	1.75
1-1/4	2.38	2.62	2.00
1-1/2	2.69	2.81	2.25
2	3.25	3.31	2.50

SQUARE HEAD PLUGS



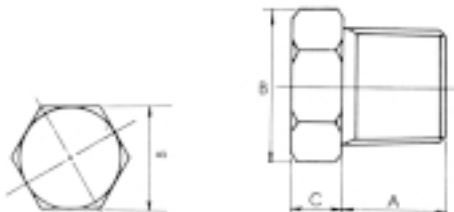
SIZE	A	B	C
1/8	0.41	0.28	0.25
1/4	0.44	0.38	0.28
3/8	0.50	0.44	0.31
1/2	0.56	0.56	0.38
3/4	0.69	0.63	0.44
1	0.81	0.81	0.50
1-1/4	0.88	0.94	0.56
1-1/2	0.88	1.13	0.63
2	0.88	1.31	0.69

CAPS



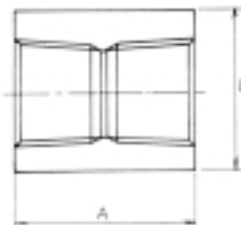
SIZE	A	B
1/8	0.75	0.75
1/4	1.00	0.75
3/8	1.00	0.88
1/2	1.25	1.13
3/4	1.44	1.38
1	1.63	1.75
1-1/4	1.75	2.25
1-1/2	1.75	2.50
2	1.88	3.00
2-1/2	2.38	3.63
3	2.56	4.25
4	2.69	5.50

HEX HEAD PLUG



SIZE	A	B	C
1/8	0.38	0.44	0.25
1/4	0.50	0.63	0.25
3/8	0.56	0.69	0.31
1/2	0.63	0.88	0.31
3/4	0.69	1.06	0.38
1	0.81	1.38	0.38
1-1/4	0.88	1.75	0.56
1-1/2	0.88	2.00	0.63
2	0.94	2.50	0.69

COUPLING



SIZE	A	B
1/8	1.25	0.75
1/4	1.38	0.75
3/8	1.50	0.88
1/2	1.88	1.13
3/4	2.00	1.38
1	2.38	1.75
1-1/4	2.63	2.25
1-1/2	3.13	2.50
2	3.38	3.00
2-1/2	3.63	3.63
3	4.25	4.25
4	4.75	5.50