

Tool Carts



Order No TS-01	Width	Depth	Height
Overall	26.5"	18.0"	33.8"
2 Drawers	22.4"	16.5"	3.1"
1 Drawer	22.4"	16.5"	6.4"
Compartment	23.4"	17.9"	10.6"
Weight	91.2 lbs		
Caster	5" X 2"		



Order No TS-07	Width	Depth	Height
Overall	40.8	18.0"	41.3"
1 Drawer	36.6	16.4"	4.1"
1 Drawer	22.4	16.4"	2.0"
2 Drawers	22.4	16.4"	3.1"
1 Drawer	22.4	16.4"	6.4"
1 Drawer	22.4	16.4"	9.6"
Compartment	12.7	16.4"	24.6"
2 Roll Out Shelves	11.8	16.4"	3.1"
Weight	236 lbs		
Caster	5" X 2"		



Order No TS-02	Width	Depth	Height
Overall	26.5"	18.0"	32.5"
1 Drawer	22.1"	16.8"	2.0"
2 Drawers	22.1"	16.8"	4.0"
Compartment	26.5"	18.0"	12.4"
Weight	59.5 lbs		
Caster	4" X 2"		



Order No TS-08	Width	Depth	Height
Overall	40.8"	18.0"	41.3"
4 Drawers	36.6"	16.4"	4.1"
2 Drawers	36.6"	16.4"	6.4"
Weight	249 lbs		
Caster	5" X 2"		



Order No TS-03	Width	Depth	Height
Overall	26.5"	18.0"	35.5"
2 Drawers	22.4"	16.4"	3.1"
1 Drawer	22.4"	16.4"	6.4"
Compartment	26.3"	17.8"	10.6"
Weight	96.5 lbs		
Caster	5" X 2"		



Order No TS-09	Width	Depth	Height
Overall	26.5"	14.0"	32.5"
3 Drawers	22.1"	12.8"	2.0"
1 Drawer	22.1"	12.8"	4.0"
2 Drawers	22.1"	12.8"	6.1"
Weight	66.5 lbs		
Caster	4" X 2"		



Order No TS-04	Width	Depth	Height
Overall	34.0"	20.0"	34.8
1 Drawer	22.1"	16.8"	2.0"
2 Drawers	22.1"	16.8"	4.0"
Compartment	26.5"	18.0"	12.4"
Weight	76 lbs		
Caster	4" X 2"		



Order No TS-10	Width	Depth	Height
Overall	26.5"	18.0"	32.5"
5 Drawers	22.1"	16.8"	2.0"
2 Drawers	22.1"	16.8"	6.1"
Weight	78 lbs		
Caster	4" X 2"		



Order No TS-05	Width	Depth	Height
Overall	22.0"	12.0"	31.3"
Top Tray Area	22.0"	12.0"	1.5"
1 Drawer	18.1"	10.8"	2.0"
2 Drawers	18.1"	10.8"	4.0"
Compartment	22.0"	12.0"	12.4"
Weight	42.3 lbs		
Caster	3" X 1"		



Order No TS-11	Width	Depth	Height
Overall	26.5"	18.0"	41.3"
1 Drawer	22.4"	16.4"	4.1"
4 Drawers	22.4"	16.4"	3.1"
2 Drawers	22.4"	16.4"	6.4"
Weight	136 lbs		
Caster	5" X 2"		



Order No TS-06	Width	Depth	Height
Overall	26.5"	18.0"	32.5"
1 Drawer	22.1"	16.8"	2.0"
2 Drawers	22.1"	16.8"	4.0"
2 Drawers	22.1"	16.8"	6.1"
Weight	72.0 lbs		
Caster	4" X 2"		



Order No TS-12	Width	Depth	Height
Overall	26.5"	18.0"	41.3"
3 Drawers	22.4"	16.5"	4.1"
2 Drawers	22.4"	16.5"	2.0"
2 Drawers	22.4"	16.5"	3.1"
1 Drawer	22.4"	16.5"	6.4"
Weight	145.5 lbs		
Caster	5" X 2"		

Tool Carts



Order No TS-13	Width	Depth	Height
Overall	26.5"	18.0"	41.3"
2 Drawers	10.6"	16.4"	4.1"
2 Drawers	10.6"	16.4"	3.1"
3 Drawers	22.4"	16.4"	3.1"
2 Drawers	22.4"	16.4"	6.4"
Weight	143.5 lbs		
Caster	5" X 2"		



Order No TS-15	Width	Depth	Height
Overall	26.5"	18.0"	41.3"
4 Drawers	6.8"	16.4"	2.0"
1 Drawer	6.8"	16.4"	4.1"
6 Drawers	22.4"	16.4"	3.1"
1 Drawer	22.4"	16.4"	6.4"
Weight	156 lbs		
Caster	5" X 2"		

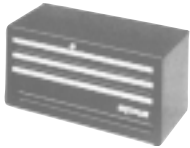


Order No TS-14	Width	Depth	Height
Overall	40.8"	18.0"	35.5"
2 Drawers	22.4"	16.4"	3.1"
1 Drawer	22.4"	16.4"	4.1"
2 Drawers	22.4"	16.4"	6.4"
2 Drawers	11.4"	16.4"	3.1"
1 Drawer	11.4"	16.4"	4.1"
2 Drawers	11.4"	16.4"	6.4"
Weight	206 lbs		
Caster	5" X 2"		

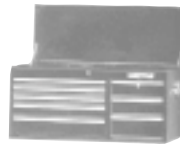


Order No TS-16	Width	Depth	Height
Overall	40.8"	18.0"	41.5"
1 Drawer	22.4"	16.5"	4.1"
6 Drawers	22.4"	16.5"	3.1"
1 Drawer	22.4"	16.5"	6.4"
1 Drawer	11.8"	16.5"	4.1"
4 Drawers	11.8"	16.5"	3.1"
1 Drawer	11.8"	16.5"	12.8"
Weight	243 lbs		
Caster	5" X 2"		

Tool Storage Cabinets



Order No TC-01	Width	Depth	Height
Overall	26.0"	12.0"	11.5"
2 Drawers	22.1"	10.8"	2.0"
1 Drawer	22.1"	10.8"	4.0"
Weight	28 lbs		



Order No TC-05	Width	Depth	Height
Overall	40.5"	16.0"	19.8"
Top Tray Area	40.5"	16.0"	2.4"
3 Drawers	22.4"	14.6"	2.0"
1 Drawer	22.4"	14.6"	3.1"
1 Drawer	22.4"	14.6"	4.1"
2 Drawers	11.8"	14.6"	4.1"
1 Drawer	11.8"	14.6"	5.3"
Weight	115 lbs		



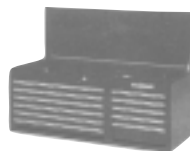
Order No TC-02	Width	Depth	Height
Overall	26.0"	12.0"	15.3"
Top Tray Area	26.0"	12.0"	1.5"
3 Drawers	22.1"	10.8"	2.0"
1 Drawer	22.1"	10.8"	4.0"
Weight	36.5 lbs		



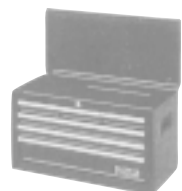
Order No TC-06	Width	Depth	Height
Overall	26.0"	12.0"	19.8"
Top Tray Area	26.0"	12.0"	2.4"
6 Drawers	6.8"	10.8"	2.0"
3 Drawers	22.4"	10.8"	2.0"
1 Drawer	22.4"	10.8"	3.1"
Weight	68.3 lbs		



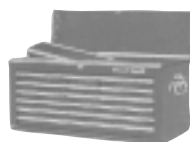
Order No TC-03	Width	Depth	Height
Overall	26.0"	12.0"	15.0"
Top Tray Area	26.0"	12.0"	2.4"
3 Drawers	6.8"	10.8"	2.0"
2 Drawers	22.4"	10.8"	2.0"
1 Drawer	22.4"	10.8"	3.1"
Weight	51.5 lbs		



Order No TC-07	Width	Depth	Height
Overall	40.5"	16.0"	19.8"
Top Tray Area	40.5"	16.0"	2.4"
5 Drawers	22.4"	14.6"	2.0"
1 Drawer	22.4"	14.6"	3.1"
4 Drawers	11.8"	14.6"	2.0"
1 Drawer	11.8"	14.6"	5.3"
Weight	121.5 lbs		



Order No TC-04	Width	Depth	Height
Overall	26.0"	12.0"	15.3"
Top Tray Area	26.0"	12.0"	1.5"
3 Drawers	6.6"	10.8"	2.0"
2 Drawers	22.1"	10.8"	2.0"
1 Drawer	22.1"	10.8"	4.1"
Weight	37.5 lbs		



Order No TC-08	Width	Depth	Height
Overall	26.0"	12.0"	19.8"
Top Tray Area	26.0"	12.0"	2.4"
9 Drawers	6.8"	10.8"	2.0"
2 Drawers	22.4"	10.8"	2.0"
1 Drawer	22.4"	10.8"	3.1"
Weight	69 lbs		