

# Galvanised Malleable Iron Fitting



Size : GIBL
1/8
1/4
3/8
1/2
3/4
1
1 1/4
1 1/2
2
2 1/2
3
4



Size : GIBRL
3/8 X 1/4
1/2 X 1/4
1/2 X 1/4
3/4 X 3/8
3/4 X 3/2
1 X 3/8
1 X 1/2
1 X 3/4
1 1/4 X 1/2
1 1/4 X 3/4
1 1/4 X 1
1 1/2 X 1/2
1 1/2 X 3/4
1 1/2 X 1
1 1/2 X 1 1/4
2 X 1/2
2 X 3/4
2 X 1
2 X 1 1/4
2 X 1 1/2



Size : GIBCR
3/8
1/2
3/4
1
1 1/4
1 1/2
2
2 1/2
3



Size : GIBCA
1/4
3/8
1/2
3/4
1
1 1/4
1 1/2
2
2 1/2
3
4



Size : GIBU
1/4 X 1/8
3/8 X 1/8
3/8 X 1/4
1/2 X 1/8
1/2 X 1/4
1/2 X 3/8
3/4 X 1/8
3/4 X 1/4
3/4 X 3/8
3/4 X 1/2
1 X 3/8
1 X 1/2
1 X 3/4
1 1/4 X 1/2
1 1/4 X 3/4
1 1/4 X 1
1 1/2 X 1/2
1 1/2 X 3/4
1 1/2 X 1
1 1/2 X 1 1/4
2 X 1/2
2 X 3/4
2 X 1
2 X 1 1/4
2 X 1 1/2
2 1/2 X 1
2 1/2 X 1 1/4
2 1/2 X 1 1/2
3 X 1
3 X 1 1/4
3 X 1 1/2
3 X 2
3 X 1
3 X 1 1/4
3 X 1 1/2
3 X 2
3 X 2 1/2
4 X 1
4 X 1 1/4
4 X 1 1/2
4 X 2
4 X 3



Size : GIBRS
3/8 X 1/4
1/2 X 1/4
1/2 X 3/8
3/4 X 3/8
3/4 X 1/2
1 X 3/8
1 X 1/2
1 X 3/4
1 1/4 X 1/2
1 1/4 X 3/4
1 1/4 X 1
1 1/2 X 1/2
1 1/2 X 3/4
1 1/2 X 1
1 1/2 X 1 1/4
2 X 1/2
2 X 3/4
2 X 1
2 X 1 1/4
2 X 1 1/2
2 1/2 X 1
2 1/2 X 1 1/4
2 1/2 X 1 1/2
3 X 1
3 X 1 1/4
3 X 1 1/2
3 X 2



Size : GIBL45°
1/4
3/8
1/2
3/4
1
1 1/4
1 1/2
2
2 1/2
3
4



Size : GIBT
1/8
1/4
3/8
1/2
3/4
1
1 1/4
1 1/2
2
2 1/2
3
4
5
6



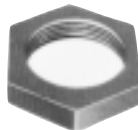
Size : GI
1/4
3/8
1/5
3/4
1
1 1/4
1 1/2
2
2 1/2
3
4



Size : GIBiBe
1/2
3/4
1
1 1/4
1 1/2
2
2 1/2
3



Size : GIBMBe
1/2
3/4
1
1 1/4
1 1/2
2
2 1/2
3



Size : GILN
1/2
3/4
1
1 1/4
1 1/2
2
2 1/2
3



Size : GIBRT
3/8 X 3/8 X 1/4
1/2 X 1/2 X 1/4
1/2 X 1/2 X 3/8
3/4 X 3/4 X 1/4
3/4 X 3/4 X 3/8
3/4 X 3/4 X 1/2
1 X 1 X 3/8
1 X 1 X 1/2
1 X 1 X 3/4
1 1/4 X 1 1/4 X 1/2
1 1/4 X 1 1/4 X 3/4
1 1/4 X 1 1/4 X 1
1 1/2 X 1 1/2 X 1/2
1 1/2 X 1 1/2 X 3/4
1 1/2 X 1 1/2 X 1
1 1/2 X 1 1/2 X 1 1/4
2 X 2 X 1/2
2 X 2 X 3/4
2 X 2 X 1
2 X 2 X 1 1/4
2 X 2 X 1 1/2



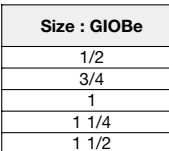
Size : GISL
1/8
1/4
3/8
1/2
3/4
1
1 1/4
1 1/2
2
2 1/2
3



Size : GIBS
1/4
3/8
1/2
3/4
1
1 1/4
1 1/2
2
2 1/2
3
4



Size : GINU
1/4
3/8
1/2
3/4
1
1 1/4
1 1/2
2
2 1/2
3
4



Size : GIOBe
1/2
3/4
1
1 1/4
1 1/2
2
2 1/2
3



Size : GINI
1/4
3/8
1/2
3/4
1
1 1/4
1 1/2
2
2 1/2
3
4